

La Mirada HS Football
FIELD LIGHTING
La Mirada, CA



CORPORATE OFFICE:
P.O. Box 808
100 1st Avenue West
Oskaloosa, Iowa 52577
800/825-6020

DRAWING TITLE:
100C POLE DETAIL

REVISIONS:

REFERENCE:

PROJECT NO.
200279

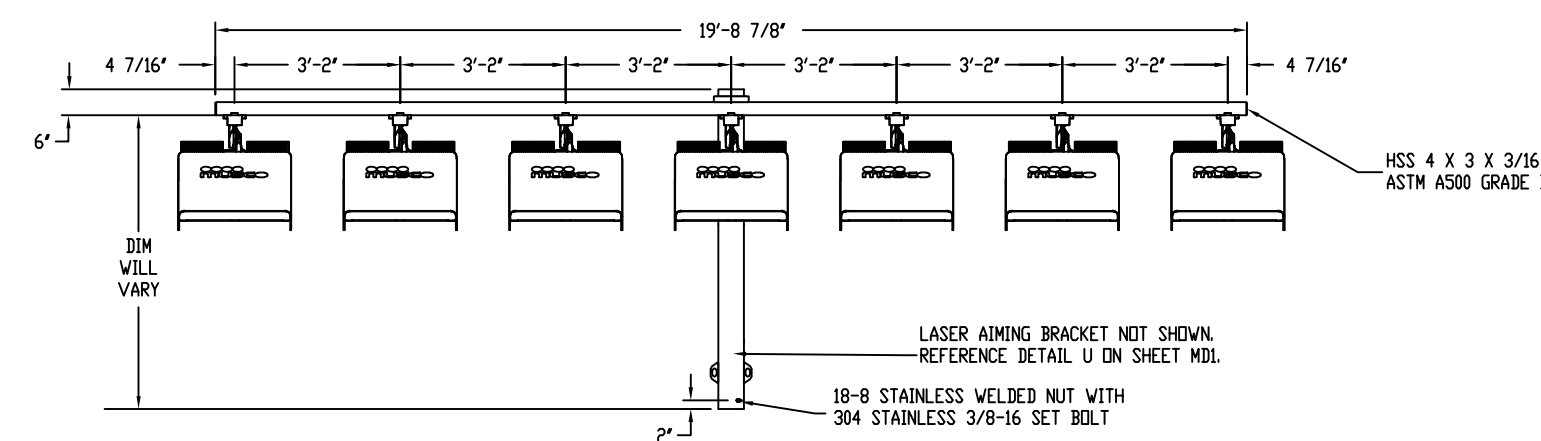
DATE:
12/10/2020

DRAWN BY:
VMA

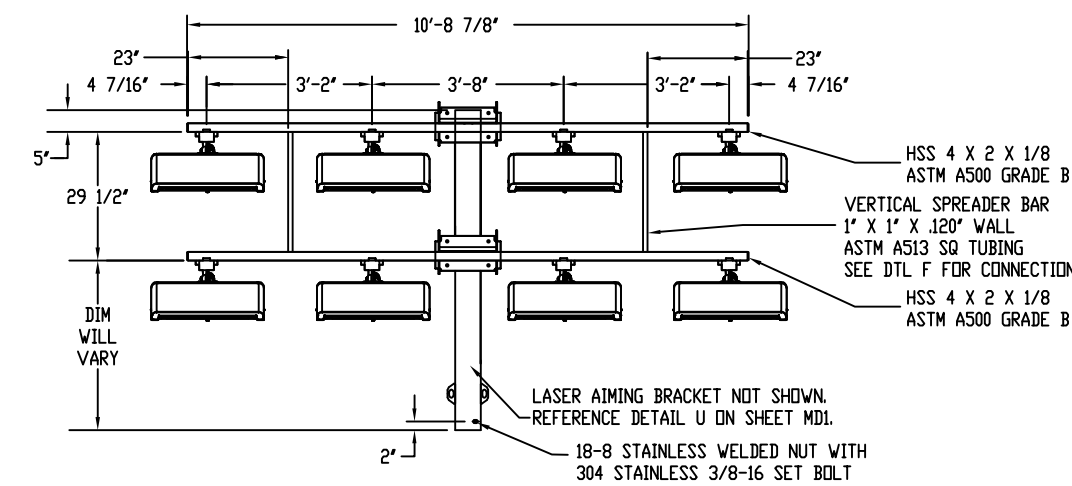
DRAWING NO.

2 OF 6

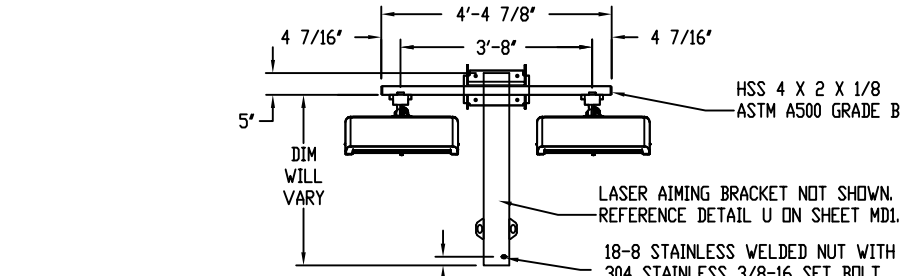
MS1



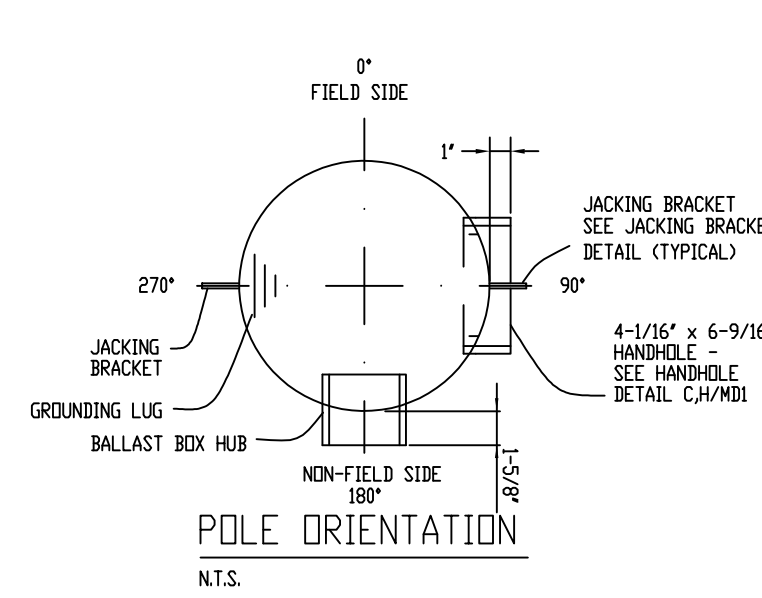
B 7 FIXTURE CONFIGURATION
N.T.S. DSA-7C-1500_A



C 8 FIXTURE CONFIGURATION
N.T.S. DSA-8C-WEDGE4_A



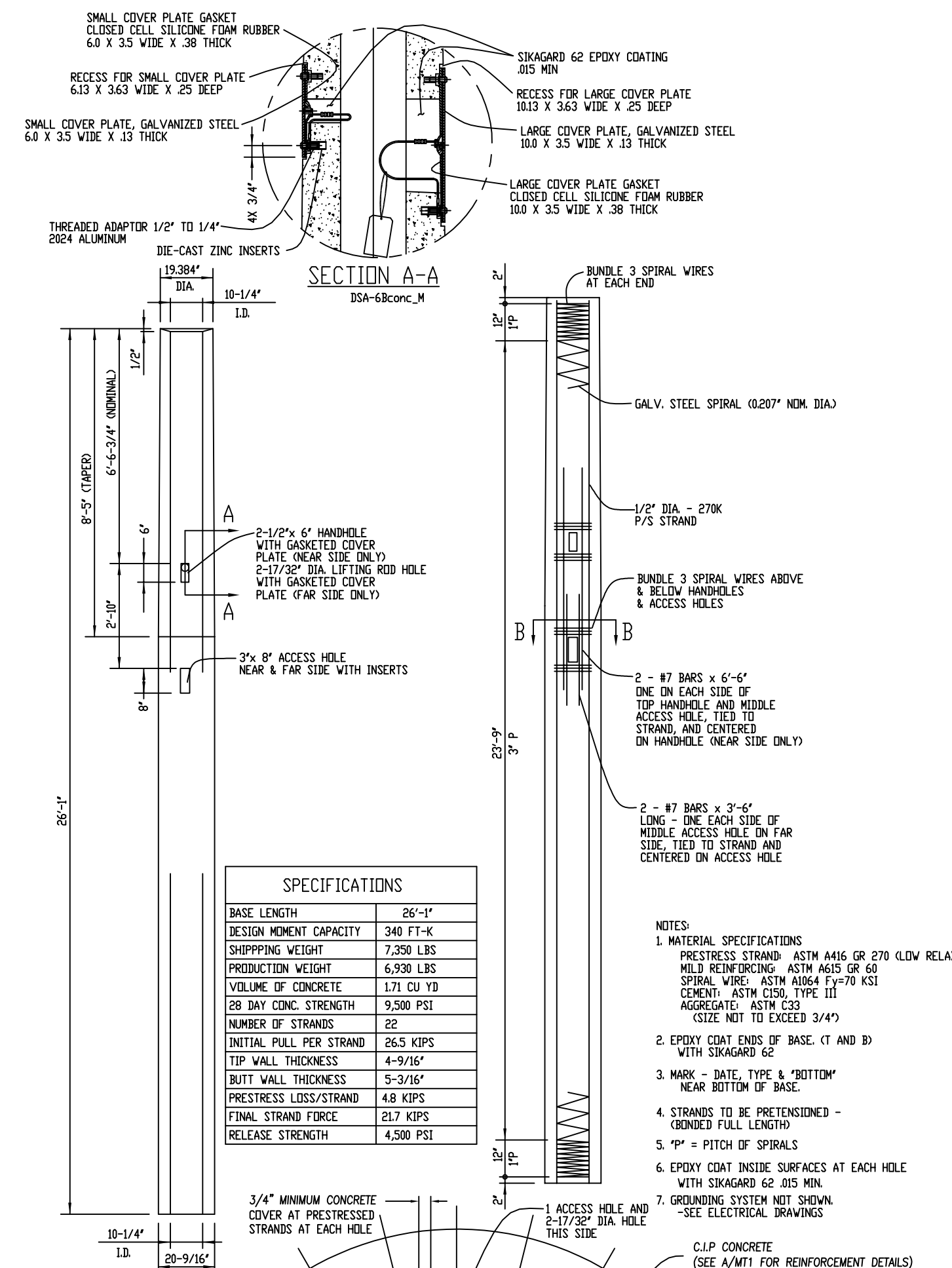
D 2 FIXTURE CONFIGURATION
N.T.S. DSA-8C-WEDGE4_A



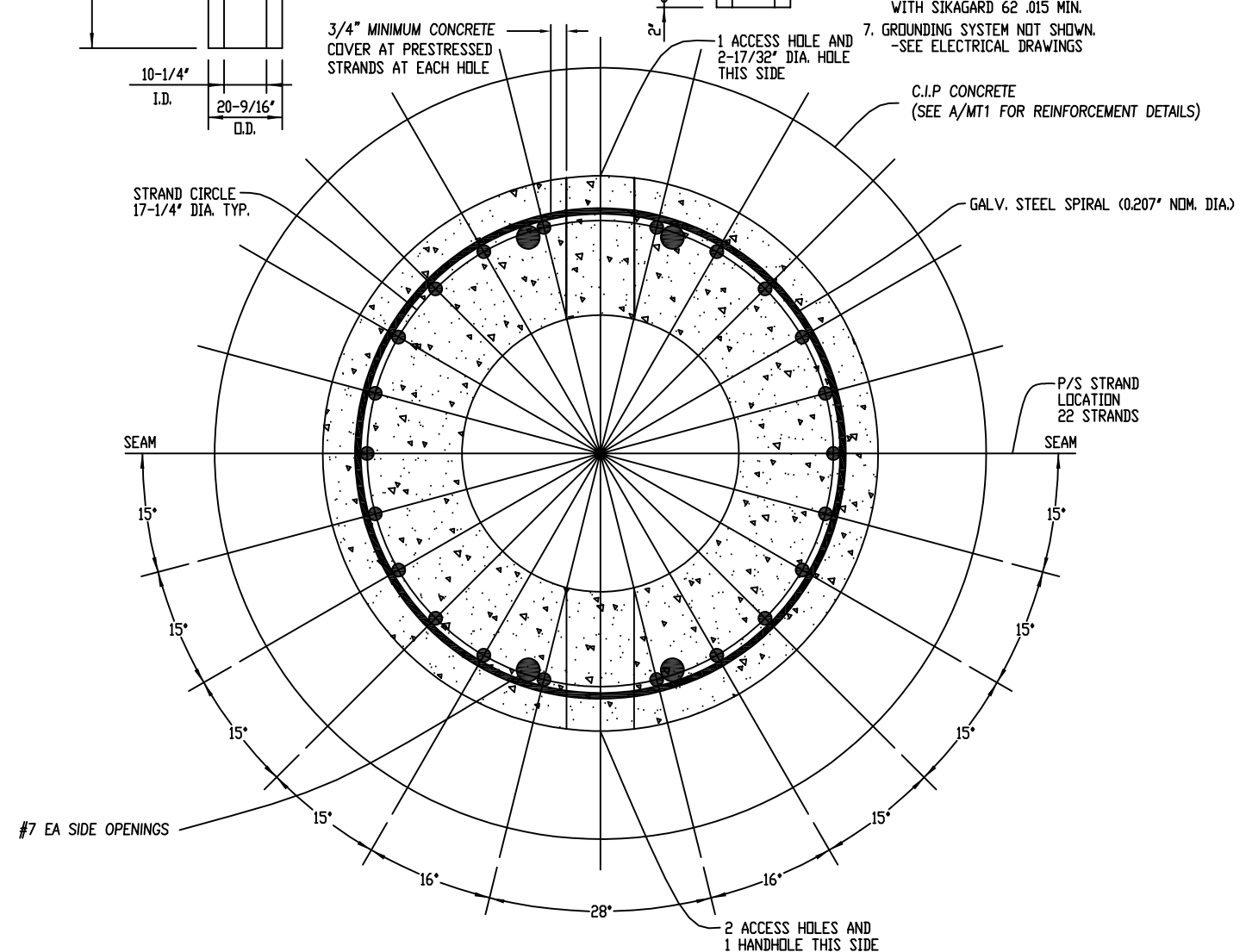
POLE ORIENTATION
N.T.S.

FIXTURE MOUNTING
POLE SECTION

TOP/MIDDLE/BOTTOM
POLE SECTION



SPECIFICATIONS	
BASE LENGTH	26'-1"
DESIGN MOMENT CAPACITY	340 FT-K
SHIPPING WEIGHT	7,250 LBS
PRODUCTION WEIGHT	6,500 LBS
VOLUME OF CONCRETE	1.71 CU YD
28 DAY CONC. STRENGTH	9,500 PSI
NUMBER OF STRANDS	28
INITIAL PULL PER STRAND	26.5 KIPS
TIP WALL THICKNESS	4'-9/16"
BUTT WALL THICKNESS	3'-3/16"
PRESTRESS LOSS/STRAND	48 KIPS
FINAL STRAND FORCE	23.7 KIPS
RELEASE STRENGTH	4,500 PSI



PLAN SECTION B-B

A TYPE 6B PRECAST BASE DETAIL
N.T.S. DSA-6Bconc_M

1. CONTAINS COMBINED EPA OF LIGHT FIXTURES, CROSS ARM AND MISCELLANEOUS FIXTURE MOUNTING APPARATUS.

FIXTURE WEIGHT 1030 LBS ON POLES F1, F3, F4, F6. FIXTURE WEIGHT 928 LBS ON POLE F2. THIS INCLUDES THE WEIGHT OF FIXTURE, CROSS ARM & MISC. MOUNTING APPARATUS. ELECTRICAL BALLAST BOX WEIGHT 20 LBS PER FIXTURE SERVICED

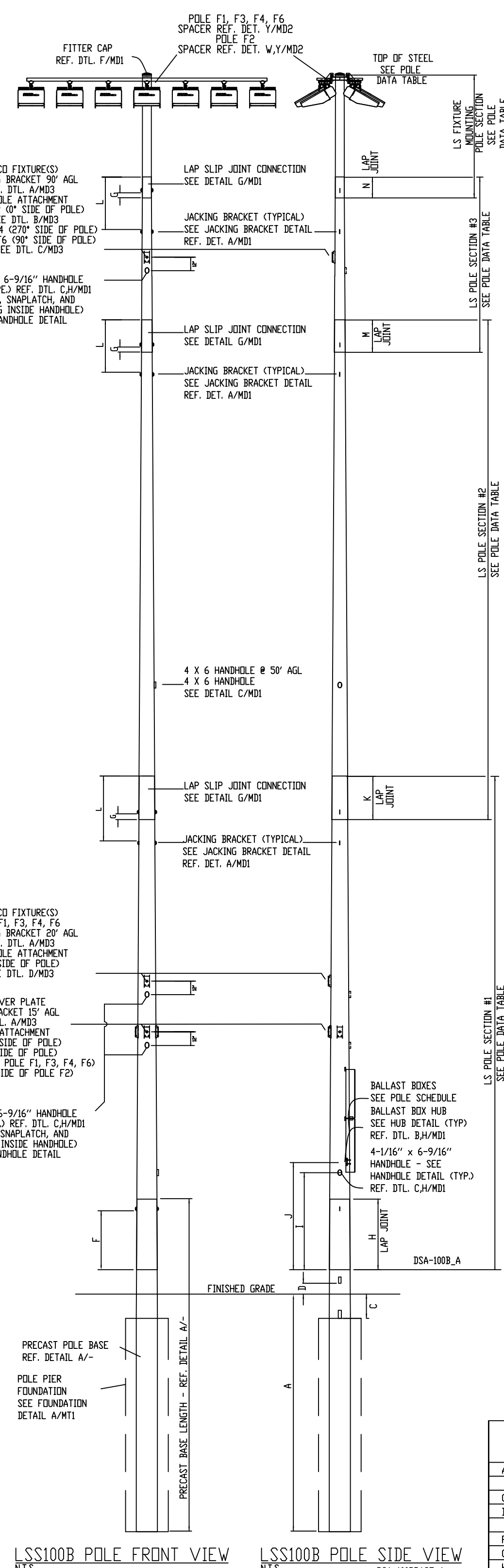
POLE SCHEDULE					
SITE LOCATION	POLE MARK	REFERENCE LOCATION	POLE TYPE	FIXTURE CONFIGURATION	TOTAL EPA ¹
SEE SITE PLAN (BY OTHERS)	F1, F3, F4, F6	SEE POLE ORIENTATION PLAN	LSS100B	7 - SEE DETAIL B/MCI	25.97
	F2	SEE POLE ORIENTATION PLAN	LSS100B	8/2 - SEE DETAIL C4/MOI	31.62

DSA-POLESCHIE_C

POLE DATA TABLE									
POLE TYPE	PIECE MARK	MAX NUMBER of X-Arms	POLE SECTION	TOP O.D. (INCHES)	BTM. O.D. (INCHES)	OVERALL LENGTH	STRAIGHT LENGTH	TAPER LENGTH	THICKNESS (INCHES)
LSS100B	LS-2017	3	FIXTURE MOUNTING	8.000"	8.781"	5'-3"	3'-1"	2'-2"	.125
	MP-41TDSA-9			8.190"	10.940"	19'-7 3/4"	-----	19'-7 3/4"	.179
	MP-SBTOSA	#3		10.133"	15.965"	41'-7 7/8"	-----	41'-7 7/8"	.179
	MP-7BTOSA-D	#1		14.954"	20.770"	41'-6 1/2"	-----	41'-6 1/2"	.239
	MP-6BDSA		PRECAST BASE						
FOR PRECAST MEMBER PROPERTIES SEE PRECAST BASE DETAIL A/-									

DSA-100BT_J

NOTATION	DIMENSION
A	18'-0"
C	2'-0" NOM.
D	1'-0" NOM.
F	4'-10" NOM.
G	1'-6"
H	6'-5 7/8" NOM. 5'-3 3/4" MIN.
I	8'-1 1/2" NOM.
J	9'-3 1/2" NOM.
K	4'-7 7/8" NOM. 3'-1 1/2" MIN.
L	5'-6 1/2" NOM.
M	3'-2 3/8" NOM. 2'-1 3/8" MIN.
N	2'-2" NOM. 1'-8 1/2" MIN.



LSS100B POLE FRONT VIEW
N.T.S. DSA-100B_A

LSS100B POLE SIDE VIEW
N.T.S. DSA-100B_A